

LUXART



Carmella C251-PUCP/BN/ORB

Features

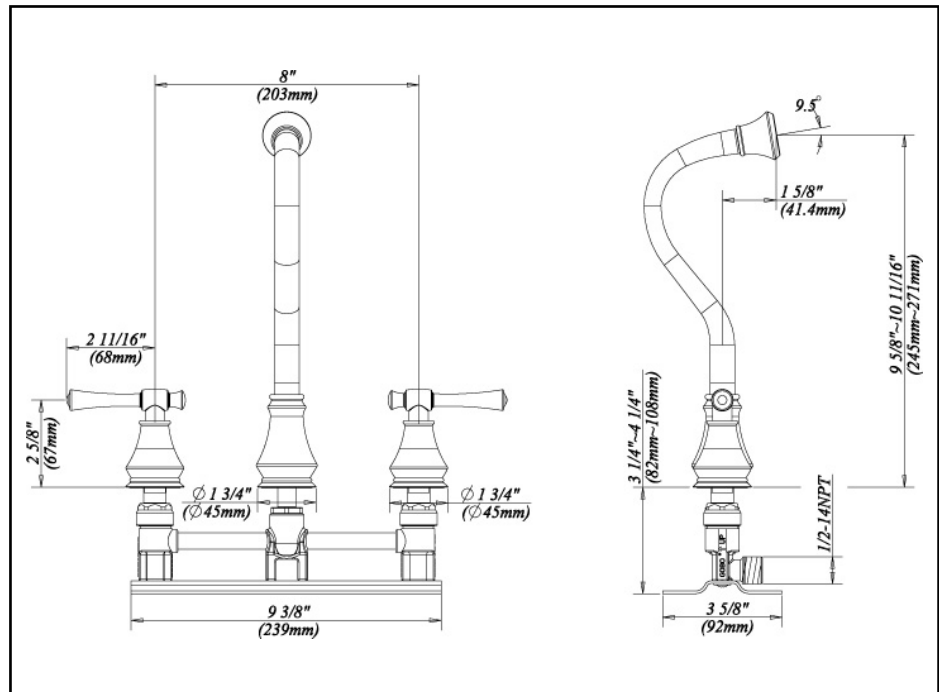
- 9 5/8" Long, 3 5/8" High Spout
- 8" Installation Spread
- Factory Tested Prior To Shipment

Available Finishes

- Polished Chrome
- Brushed Nickel
- Oil Rubbed Bronze

Certifications

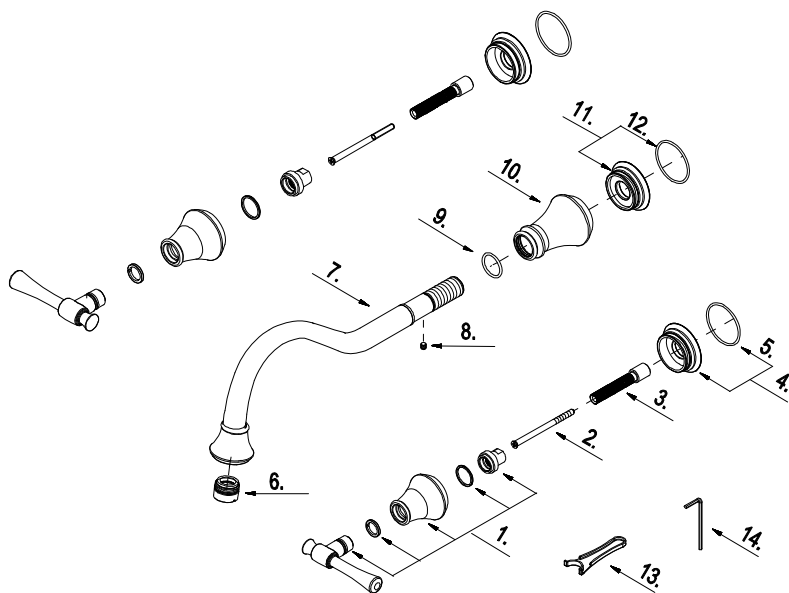
- CSA Certified
- IAPMO Listed
- ADA Compliant
- NSF Compliant



LUXART

Parts List

No.	Part Name	Part No.
1	Metal Handle	A662633
2	Screw (3/16" -24 * 1/16" L)	A008766
3	Handle Adaptor	A110361
4	Handle Base	A667744
5	O-Ring (Φ1-3/8" ID *Φ1-1/2" OD)	A004024
6	Aerator	A500060N
7	Screw (M4 * 5 mm L)	A008191
8	Spout	A139584N
9	O-Ring (Φ3/4" ID * Φ7/8" OD)	A063066
10	Spout Base	A018916
11	Spout Trim Ring	A667745
12	O-Ring (Φ1-3/8" ID *Φ1-1/2" OD)	A004024
13	Wrench	A031025ZN
14	Hex Wrench (H2.5 * 19 mm L * 53 mm L)	A031000



For replacement parts,
or technical assistance, please call (888) 328-2383

Faucet Specifications

