

LUXART



Carmella C137-CP/BN/ORB

Features

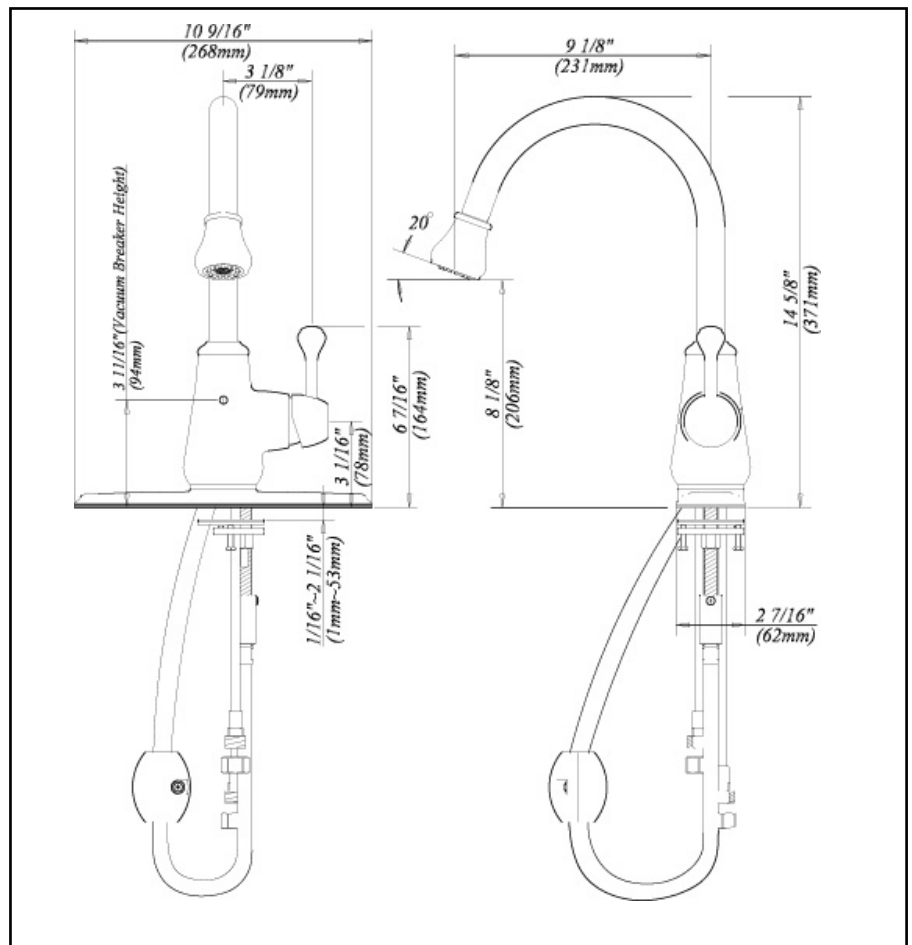
- Ceramic Disc Cartridges
- Brass Waterways
- 9 1/8" Long, 14 5/8" High Spout
- Factory Tested Prior To Shipment

Available Finishes

- Polished Chrome
- Brushed Nickel
- Oil Rubbed Bronze

Certifications

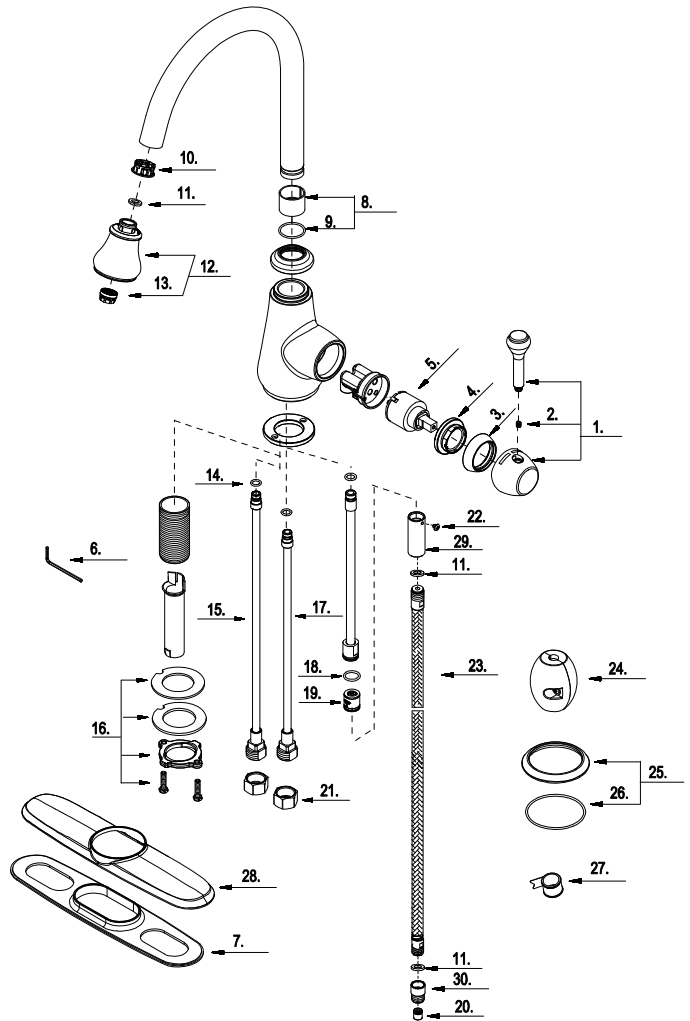
- CSA Certified
- IAPMO Listed
- NSF Compliant
- ADA Compliant



LUXART

Parts List

No.	Part Name	Part No.
1	Metal Handle Assembly	A662504
2	Screw(M5 * 5mm L)	A008003
3	Trim Cap	A103269
4	Locking Nut	A104207
5	Ceramic Disc Cartridge	A507348N
6	Hex Wrench (H2.5 * 19 mm L * 53 mm L)	A031000
7	Putty Plate	A011347NF
8	Spout Seal Kit	A66D047
9	O-Ring(Φ 1" ID * Φ 1-1/8" OD)	A063008
10	Hose Guide	A126999KP
11	Seal	A010035N
12	Hand Spray W/ Check valve	A523444N
13	Aerator	A553636N
14	O-Ring(Φ 5/16" ID * Φ 7/16" ID)	A004001N
15	Supply Pipe -Hot	A051322N
16	Mounting Hardware	A603171
17	Supply Pipe -Cold	A051321N
18	O-Ring Φ 7/16" ID * Φ 9/16" OD)	A004023N
19	Check Valve	A519212N
20	Check Valve	A519204N
21	Coupling Nut	A009016
22	Screw(5/32" -32 * 1/4" L)	A008048
23	Spray Hose	A511414N
24	Weight	A504713
25	Body Trim Ring	A607132
26	O-Ring Φ 2-9/16" ID * Φ 2-11/16" OD)	A063096
27	Pipe Tape	A203000
28	Cover Plate	A007581
29	Hose Adaptor	A057690N
30	Hose Adaptor	A057689N



For replacement parts,
or technical assistance, please call (888) 328-2383

Faucet Specifications

