

LUXART



401

Features

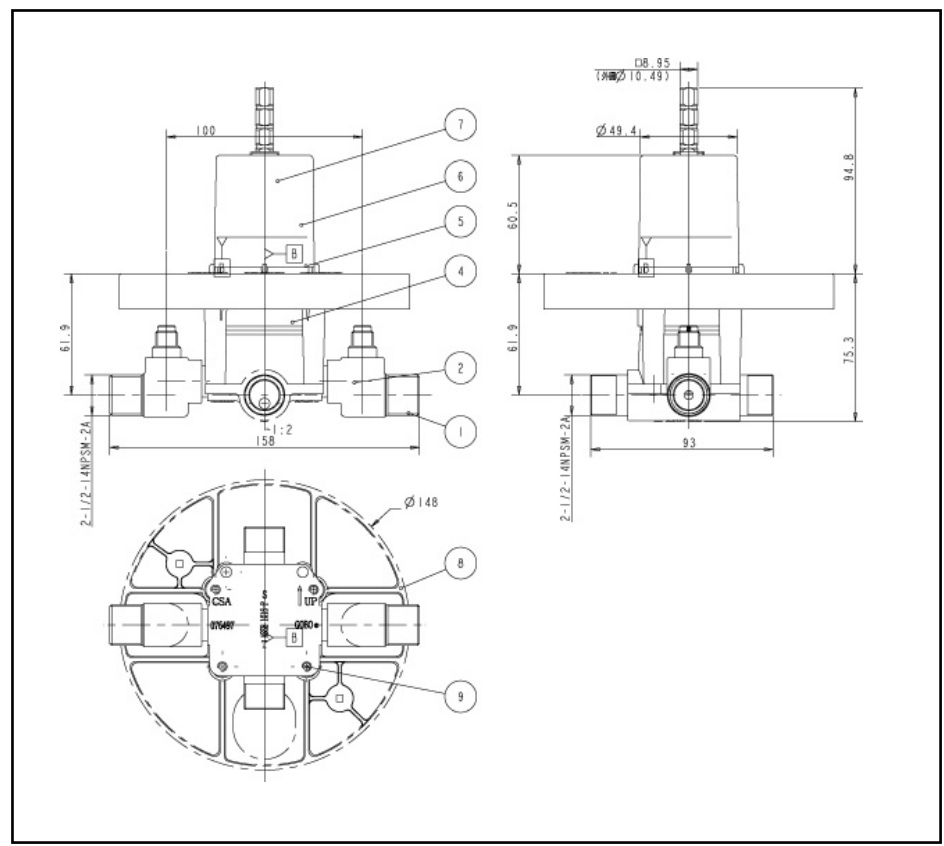
- Ceramic Disc Cartridges
- Brass Waterways
- Pressure Balance Applicable
- Factory Tested Prior To Shipment

Available Finishes

- Polished Chrome
- Brushed Nickel
- Oil Rubbed Bronze

Certifications

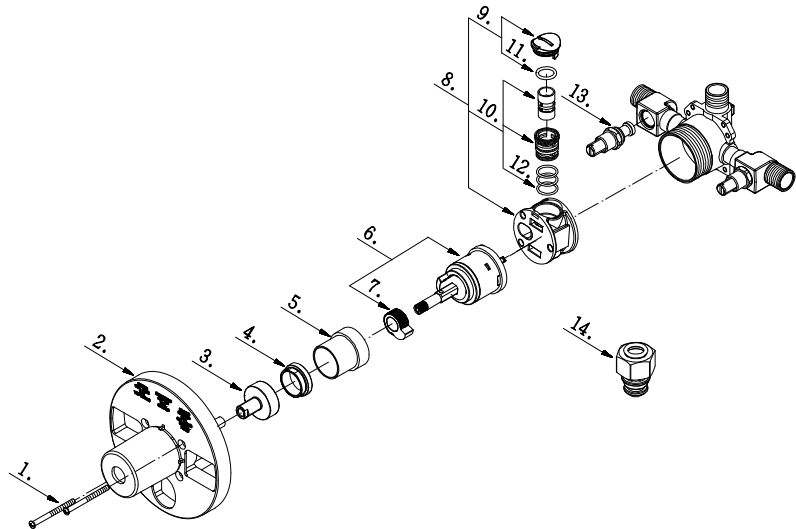
- CSA Certified
- IAPMO Listed



LUXART

Parts List

NO.	Part Name.	Part No.
1	Screw (3/16" -24 * 2-3/16" L)	A008241
2	Plaster Guard	A127008
3	Base Nut	A009921
4	Locking Nut	A104105
5	Sleeve	A041061
6	Ceramic Cartridge Assembly	A507734
7	Temperature Limiting Device	A603570
8	Pressure Balancing Insert	A034275
9	Cap	A603632
10	Piston & Cylinder Assembly	A208256
11	O-Ring(ϕ 5/8" ID * ϕ 3/4" OD)	A004015
12	O-Ring (ϕ 9/16" ID * ϕ 5/8" OD)	A048026
13	Check Valve	A663987
14	Plug	A028452



For replacement parts,
or technical assistance, please call (888) 328-2383

Parts Specifications

